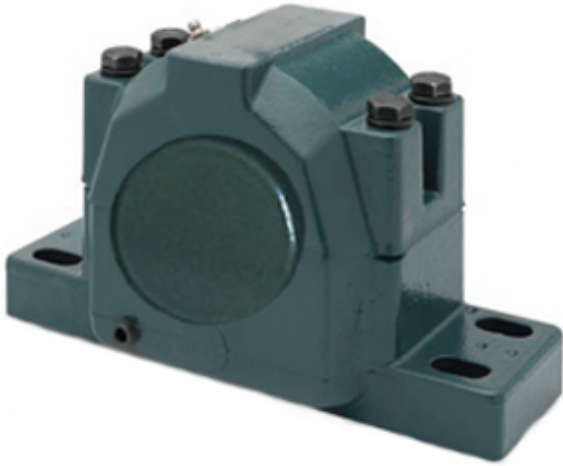




DDH BEARINGS(UK)LTD.

2.438 Inch | 61.925 Millimeter x 5.203 Inch |
132.156 Millimeter x 3.25 Inch | 82.55 Millimeter
DODGE CP4B515-USAF-207TT Pillow Block
Bearings



CP4B515-USAF-207TT Bearing 2D drawings and 3D CAD models

Bearing No. CP4B515-USAF-207TT

Category	Pillow Block Bearings
Inventory	0.0
Manufacturer Name	ABB MOTORS AND MECHANICAL INC
Minimum Buy Quantity	N/A
Weight	16.194
EAN	0782475770809
Product Group	M06288
Number of Mounting Holes	4
Mounting Method	Adapter Sleeve
Housing Style	4 Bolt Pillow Block
Rolling Element	Spherical Roller Bearing
Housing Material	Cast Iron
Expansion / Non-expansion	Non-expansion
Mounting Bolts	1/2 Inch
Relubricatable	Yes
Insert Part Number	BRG22215KC3
Seals	Triple Tect
Housing Configuration	2 Piece Split
Inch - Metric	Inch
Other Features	Double Row Closed End Corrosion Resistant
Long Description	4 Bolt Pillow Block; 2-7/16" Bore; 3-1/4" Base to Center Height; Adapter Sleeve



DDH BEARINGS(UK)LTD.

	Mount; Spherical Roller Bearing; 8-5/8" Minimum Bolt Spacing; 9-5/8" Bolt Spacing Maximum; Relubrica
Category	Pillow Block
UNSPSC	31171511
Harmonized Tariff Code	8483.20.40.80
Noun	Bearing
Keyword String	Pillow Block
Manufacturer URL	http://www.dodge-pt.com
Manufacturer Item Number	CP4B515-USAF-207TT USAF
Manufacturer Internal Number	039582
Weight / LBS	27.9
Bolt Spacing Maximum	9.625 Inch 244.475Millimeter
Actual Bolt Center to Center	0 Inch 0Millimeter
Nominal Bolt Center to Center	8.8 Inch 223 Millimeter
D	5.203 Inch 132.156 Millimeter
Bolt Spacing Minimum	8.625 Inch 219.075Millimeter
d	2.438 Inch 61.925 Millimeter
B	3.25 Inch 82.55 Millimeter